



Linear motion technology

MR High precision, high load capacity Miniature Linear Guide Series

Small is smart / Small is beauty / Miniature brings infinity

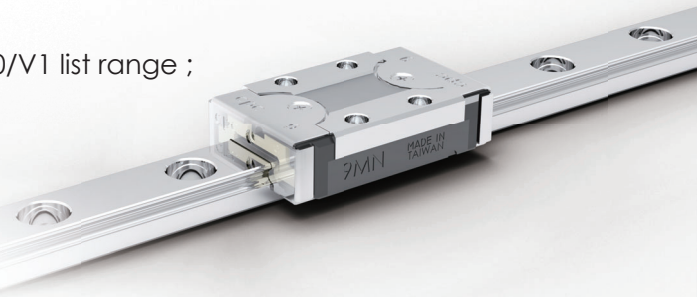
Interchangeability

Interchangeable for blocks also for rails

- The same interchange grade means it is interchangeable.
- Interchange grade is expressed in digits, e.g., B+2, R-1, etc.
- The difference value ($B\bar{X}-R\bar{X}$) is positive means with clearance in set, the larger the positive value, the larger the clearance;
The difference value ($B\bar{X}-R\bar{X}$) is negative means with preload in set, the larger the negative value, the larger the preload.

- *VD: special specification for clearance/preload range < V0/V1 list range ; also for specified friction resistance range.

* Please get in touch with **cpc** technical department.
(For details, please refer to the **cpc** MR miniature linear guide catalog)



Ordering Information

MR	-	15	M	L	K	EE	-	B \bar{X}	P	-	-	-	J	Block separate delivery		
MR	U	15	M	-	K	-	-	R \bar{X}	P	-310L	-15	-15	-	J	Rail separate delivery	
MR	U	15	M	N	K	EE	2	V1	-	P	-310L	-15	-15	II	J	Assembled set
														Customization code		
														Number of rails on the same moving axis		
														End hole pitch (mm)		
														Starting hole pitch(mm)		
														Rail length (mm)		
														Accuracy Grades: P (Precision), H (High), N (Normal)		
														Interchange grad : \bar{X} expressed in digit		
														Preload classes: V0: clearance VS: standard V1: light preload VD: special specification		
														Block quantity: Quantity of the runner block		
														SS: with end seal ZZ: end seal + lubrication storage ZU: end seal + bottom seal + lubrication storage EZ: end seal + reinforcement plate + lubrication storage EU: end seal + reinforcement plate + stainless bottom seal UZ: end seal + reinforcement plate + stainless bottom seal + lubrication storage SUE: end seal + bottom seal + reinforcement plate ZUE: end seal + bottom seal + reinforcement plate + lubrication storage SU: end seal + bottom seal EE: end seal + reinforcement plate		
														Rail material : No Mark : standard rail K : carbon steel (Now available: size 9, 12, and 15.)		
														Block type: L: long N: standard		
														Rail type: M: standard W: wide		
														Rail dimension: The width of rail ex. : 2,3,5,7,9,12,15		
														Special Rail U: upward screwing rail No Mark: standard rail		
														Product Type: MR: Miniature Linear Guide		

2023.04.18 Printed in Taiwan

cpc CHIEFTEK PRECISION Co., LTD.

HEADQUARTERS
CHIEFTEK PRECISION Co., LTD.
No.3, Dali 1st Rd., Xinshi Dist., Southern Taiwan
Science Park, Tainan City, 741-45, Taiwan (R.O.C)
TEL:+886-6-505 5858 Http://www.chieftek.com
E-mail:service@mail.chieftek.com

CHIEFTEK PRECISION USA
2280 E. Locust Court.
Ontario, CA 91761, USA
Tel:+1-909-773-1200
Fax:+1-909-773-1202

cpc Europa GmbH
Industriepark 314,
D-78244 Gottmadingen, Germany
TEL:+49-7731-59130-38
FAX:+49-7731-59130-28

CHIEFTEK MACHINERY KUNSHAN Co., LTD.
No.1188, Hongqiao Rd, Kunshan,
Jiangsu, P.R. China
TEL:+86-512-5525 2831
FAX:+86-512-5525 2851



* cpc reserves the right to revise any information (technical details) any time without notice, for printing mistakes or any other incidental mistakes. We take no responsibility.